

Camp Aldersgate

Retreat Center, Waterfront Cabins, Dining Hall & Health Lodge.

The land Aldersgate sits on was purchased from the Grace Episcopal Church in 1944. The first year of camp was 1945



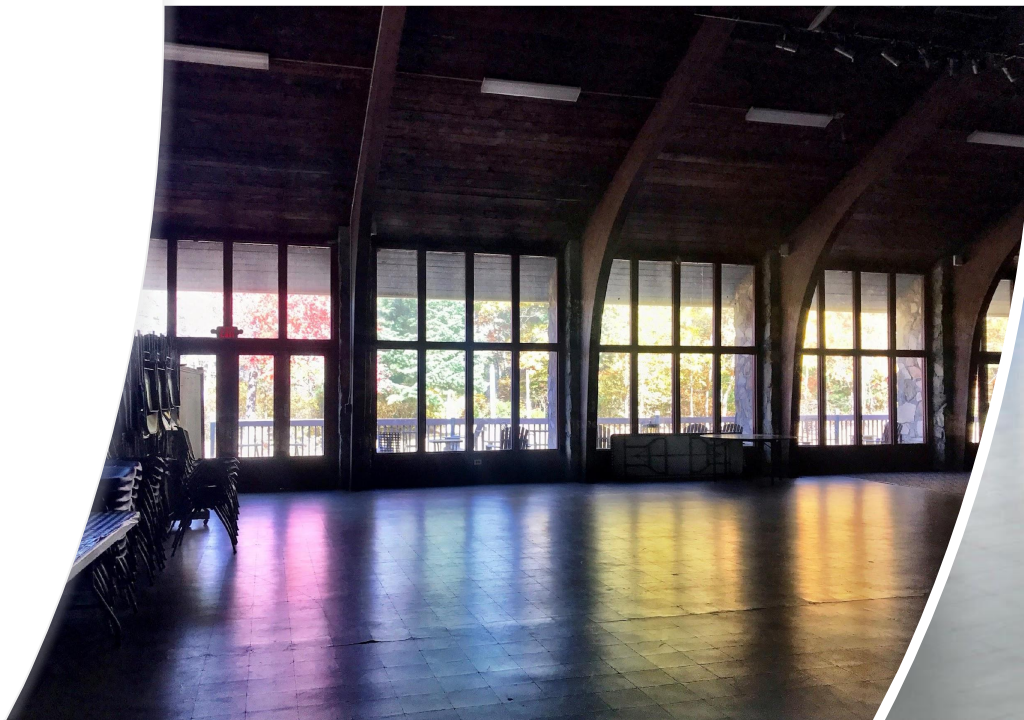


The Retreat Center can sleep up to 64 guests and has 3 meeting spaces.

The Retreat Center has 13 rooms, 9 rooms with 4 beds and 4 rooms with 7 beds.




- The Great Hall in the Retreat Center has 2,400 square feet providing plenty of space for church functions, school activities family reunions or even weddings.



The Lakeside Room is the perfect breakout space for around 20 people for coffee, snacks or a meeting.



The image shows the interior of a room with a wood-paneled ceiling and walls. In the foreground, there are two long tables covered with blue and white checkered tablecloths, surrounded by black chairs. In the background, there are large windows and a double door with a green exit sign above it. A large white diamond shape is overlaid on the center of the image, containing text.

The Wesley Room is a
great meeting space for
10-15 guests.



Waterfront Cabins

The Waterfront Cabins are located at Lake Aldersgate. There are 3 duplex cabins that have 10 beds on one side and 8 on the other side. The cabins that have 8 beds are handicap accessible. The fourth cabin has an open floor plan with 12 beds.





Cabin Lois has an open floor plan and 12 beds. Some groups use this as a meeting space.





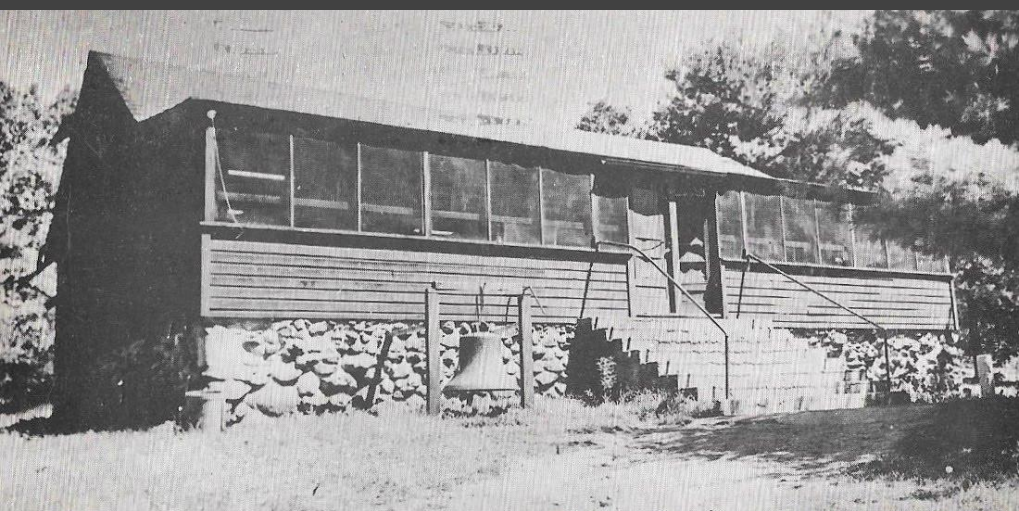
Lake Aldersgate has Swimming, Boating, & Fishing

A wooden fishing dock with metal railings extends from the foreground into a calm lake. The dock is made of wooden planks and has a small wooden box on the left side. The lake's surface is dark and reflects the sky and trees. In the background, a dense forest of evergreen and deciduous trees lines the shore. The sky is blue with scattered white clouds. A pine branch hangs from the top center of the frame. The text "Fishing Dock" is overlaid in white on the lower left portion of the image.

Fishing Dock



Dining Hall



Aldersgate's Dining Hall has changed many times over the years. Last year the dining hall floor was re-done.



The Health Lodge

- The Health Lodge has 12 beds, 1.5 baths, small kitchenette, lounge area, and a meeting space in the basement.

Small Common Room in the Health Lodge



Health Lodge Kitchenette



Health Lodge Meeting Space





The Health Lodge has 12 beds



The Amphitheater is just across from the Health Lodge and has a stage and a fire ring. The Amphitheater can seat up to 150 guests.